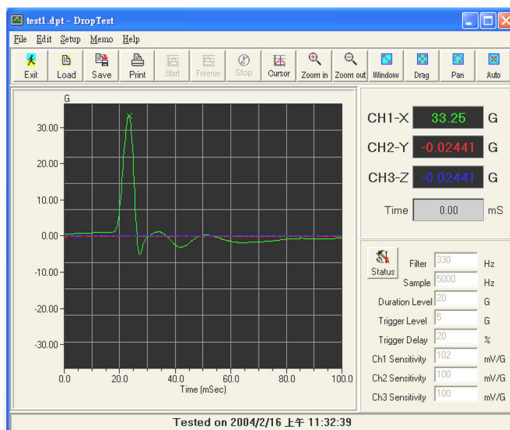




# DT-1213 Drop Test System 3CH

## Ethernet Base All New Drop System

The new measurement system, using **Ethernet Base** correspondence interface, no matter what the notebook or computer, just plug network cable, immediately can be measurement test.



### Input the more channels:

Easy to use measure software provide 3 synchronization channel.

It can setting 1,2,3 channel. All input channel are synchronization .it can setting trigger delay.

## Function & Specification

- Test Channel : 3 channel
- Sampling Rate : 10-20kHz(Max dep. on Ch.)
- Synchrony : Sample & Hold
- Input Range :  $\pm 5,0.5V$
- Input Impedance : 1 M Ohm
- Trigger Channel : Auto
- Trigger Delay : 10~90%
- Filter : 65Hz~20kHz
- Interface : 100 Base-T RJ-45
- Power : 100~240VAC 50/60Hz
- Weight : 2.5 kg
- Size : 88(w) x 195(h) x 218 (d) mm



**Dynamic Trend Enterprise Co., Ltd.**

No.49 Lane 116, Minhu Rd. HSINCHU, 300 TAIWAN R.O.C.

TEL: +886-3-5611239 FAX: +886-3-5620780

<http://www.dynatrend.com.tw>

