



# DB062

# Dynamic Balance Analyzer

## Vibration Analysis Has Never Been as Easy!

- ✓ The touch activated LCD screen
- ✓ Built-in ISO-1940 Rotor balance grades
- ✓ Action disk USB card
- ✓ Handle can be adjustment



### DESCRIPTION:

DB062 is easy to use and can replace outdated instruments, The touch activated LCD screen allows quick data entry. Screen prompts and online help assist the operator in obtaining fast accurate results. The precision balancing provides a high measurement accuracy.

### key Feature

- Portable type rotors dynamic balancer / Monitor / Analyzer on line.
- Easy to set up, Operate & learn with quick guide.
- One / two plane balancing.
- Balance analysis with spectrum.
- USB for upgrading / Saving / Printing / Language transferring.
- System setting (Tolerance limit / Power / Language / Date & Time).
- Rechargeable Li-ion batteries.
- Screen prompts and online help assist the operator in obtaining fast accurate results.

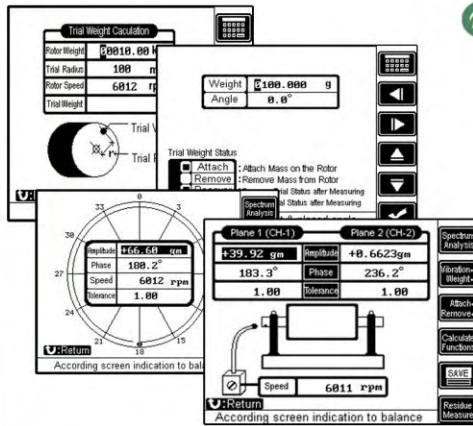
### Standard Configurations



Vibration sensor	x2	Power adapter	x1
Signal cable	x2	USB Flash card	x1
Photo sensor	x1	Instruction CD-ROM	x1
Magnetic base	x1	Instruction Manual	x1

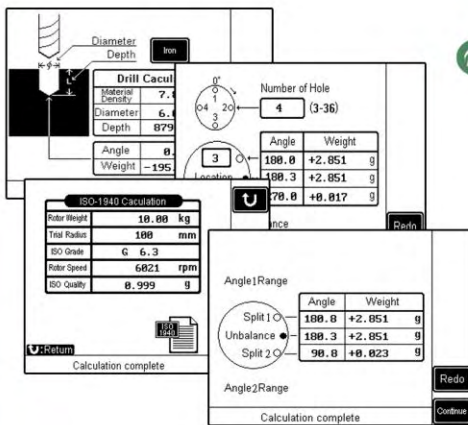


# THE BEST PARTNER FOR MEASUREMENT TECHNOLOGY



## **Rotor Balance**

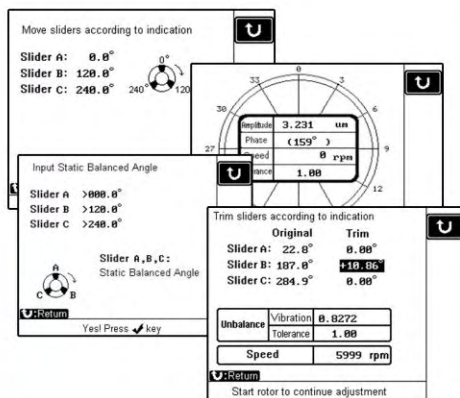
The balancing module provides one or two plane balancing, once the balancing information is imputed and readings are taken, the analyzer will show the correction automatically, by means of a very simple process, which requires only the positioning of an optic sensor for the phase calculation and two vibration readings for both plan's, quick and precise calculations are obtained.



## **Balance Calculation**

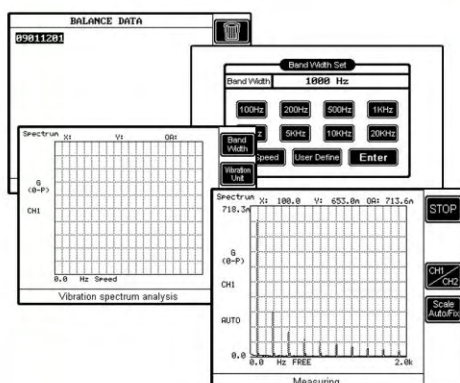
The built phase module allows for quick and easy phase analysis, such items as:

- Built-in ISO-1940 Rotor balance grades.
- Split calculate
- distribute calculate
- drill hole calculate



## **Grinder Balance**

Three sliders on try angle, to test the object vibration measurement, to get an effective range of the frequency signal, must find the different frequency in the frequency range for doing vibration measurement on many times, to get effective measurement.



## **Spectrum Guideline**

Spectrum (x) is Speed frequency, (Y) is vibration quantity. If appears the peak graph in the mechanical main axle rotational speed frequency, expressed the axis of rotation has the big vibration quantity. If appear the peak in the multiple at main axle of rotational speed place it's multiple is Fourier series, so the Fourier is vibration source. If frequency high region in appears the peak, then generally have problem for the bearing.

## DB062 DYNAMIC VIBRATION ANALYZER



Functions	Specification
Measurement range	G : 0.0001~25G mm/s : 0.01~1,300mm/s (O-P) $\mu\text{m}$ : 0.01~6,000 $\mu\text{m}$ (P-P) (@1800 rpm)
Amplitude Resolution	0.1mg , 0.01mm/s , 0.01 $\mu\text{m}$ (@1800 rpm)
Phase Resolution	0.1°
RPM Range	100~60,000 rpm
Vibration Unit	G : 0-P / mm/s : 0-P / $\mu\text{m}$ : P-P
RPM Pickup	Optical Fiber Photo Sensor
Pickup Range	6cm
Vibration Sensor	Accelerometer 100mV/g (typical)
CPU	Vortex 300MHz (32bits)
Display	320x240 dot LCD, LED Back-light, Touch Screen
Temperature Range	0°C ~ 40°C
Power Consumption	7W
Battery	Rechargeable Li-ion Battery
Power	100~240VAC Adaptor 50/60Hz
Size	210 x 190 x 45 (mm)
Weight	1.2kg
Storage Interface	USB card



**Dynamic Trend Enterprise Co.,Ltd.**

No.49, Lane 116, Minghu Rd., Hsinchu City,  
Taiwan 300,R.O.C.

TEL:+886-3-5611239 FAX:+886-3-5620780

